

ANPING TAILONG

HARDWARE&WIRE MESH PRODUCTS CO.,LTD

TLWY[®]
TaiLong Fence



CATTLE PANEL
LIVESTOCK FENCE PANEL



Mobile:

+86-133-2318-6988
+86-153-6985-6999



Email:

Sales@fence-global.com
Sales@wiremesh-global.com



No.19, Jingsi road,
high-tech-industrialdevelopment
zone, Anping, Hebei, China



Cattle Panel

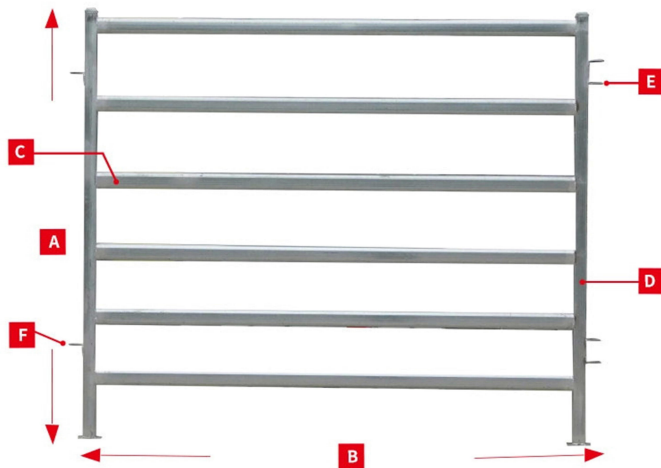
The cattle panel is built from reinforced galvanized steel tubing. Suitable for cattle yards, feeding areas, loading zones. Generally, it is made of square, oval or round tubes and have high strength and solid structure. It can sit directly on the ground for temporary or permanent fencing to keep cattle safe and free from wild animal attacks. We have cattle of different heights, lengths and number of rails for you to choose from.





DESCRIPTION & CATEGORY

- A Height:** 950 mm, 1000 mm, 1800 mm
- B Width:** 2100 mm, 2900 mm
- C Horizontal rail:** Round rail (32 mm OD, 42 mm OD);
Square rail (40 × 40 mm, 50 × 50 mm);
Oval rail (30 × 60 mm, 40 × 80 mm,
42 × 115 mm, 50 × 70 mm)
- D Vertical pipe:** Round pipe (32 mm OD, 42 mm OD);
Square pipe (40 × 40 mm, 50 × 50 mm)
- E U lug**
- F L lug**



Cattle Panel With Oval Rails	
Height * length	1.8*2.07m, 1.8*2.09m, 1.8*2.1m, etc
Horizontal oval rail	30*60mm, 40*80mm, 42*115mm. 5 or 6pcs
Vertical square tube	40*40mm, 50*50mm
Accessories	2 U lugs, 2 L lugs, 2 rain caps and 2 bases are welded on panel 2 pins are included in 1 panel
Material	Hot dipped galvanized tube

Cattle Panel With Square Rails	
Height * length	1.6*2.07m, 1.8*2.07m, 1.8*2.09m, etc
Horizontal oval rail	40*40mm, 50*50mm. 5 or 6pcs
Vertical square tube	40*40mm, 50*50mm
Accessories	2 U lugs, 2 L lugs, 2 rain caps and 2 bases are welded on panel 2 pins are included in 1 panel
Material	Hot dipped galvanized tube



DESCRIPTION & CATEGORY

Cattle Panel With Round Rail

Height * length	1.8*2.1m
Horizontal oval rail	60mm OD, 5 or 6pcs
Vertical square tube	60mm OD
Accessories	4 lugs, 2 rain caps are welded on panel 2 pins are included in 1 panel
Material	Hot dipped galvanized tube

Different Load-Bearing Capacities



Bronco Panel

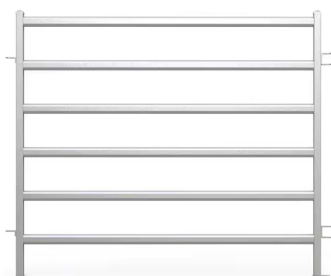


PHD Panel



SHD Panel

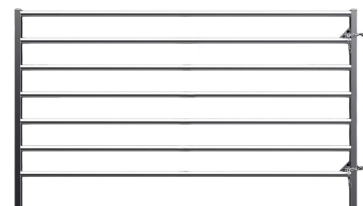
Rail Type



Cattle Panels Oval Rail With Square Post Style



Cattle Panels Square Rail Style



Round Rail Style



Production Flow Chart



STEP 01

Hot-Dip Galvanized Steel Pipes



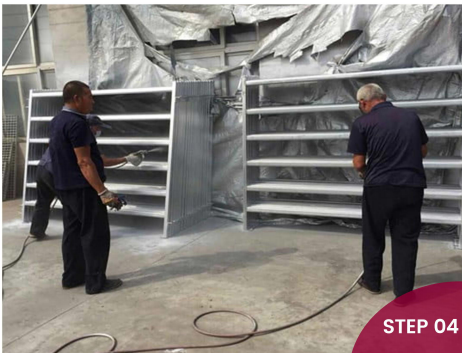
STEP 02

Laser Cutting



STEP 03

Laser Welding



STEP 04

Hot-Dip Galvanizing



STEP 05

Electrostatic Spraying



STEP 06

Finish

Package & Delivery



CORRAL PANEL PACKAGE



DELIVERY



FEATURES & APPLICATION

FEATURES

✔ High Durability

Cattle fence panels are typically made of robust materials such as steel, wood, or composite materials. Steel fence panels are particularly durable, resisting impacts from cattle and the effects of the external environment, ensuring long-term durability.

✔ Corrosion Resistance

Most modern cattle fence panels undergo anti-corrosion treatments, such as hot-dip galvanizing or spraying with anti-corrosion coatings, especially in humid or outdoor environments. This significantly extends the fence's lifespan and prevents rust.

✔ High Safety

Fence panels are designed with the cattle's movement area in mind, ensuring they won't accidentally break through or get stuck. The height and structure of the panels are usually carefully designed to prevent cattle from escaping or colliding with each other.

✔ Good Airflow

Cattle fence panels are often designed with gaps or a mesh structure to ensure unobstructed visibility for the cattle while allowing air circulation, maintaining the fenced area's openness and preventing overheating or stuffiness.

✔ Easy Installation and Maintenance

Many cattle fence panels can be quickly assembled and disassembled, allowing farmers to easily adjust the fence's layout and size as needed. Furthermore, the panel design is usually simple and easy to clean, reducing the difficulty of daily maintenance.

✔ Comfort

Modern cattle fence panels also consider the comfort of the cattle, reducing sharp edges and corners to prevent injury during movement. Furthermore, the design of cattle fence panels provides ample space for the cattle to move freely within the enclosure.

✔ Adaptability

Different cattle fence panels are suitable for different environments and needs. Some are suitable for pastures and farmland, while others are better suited for use as barn fencing. The design is customized based on the scale of the farm, the number of cattle, and environmental conditions.

APPLICATION



Farm



Pastures



Region Segmentation



Small Scale Farming



Animal Sanctuary



Large Scale Grasslands



Production-Workshop-1



Production-Workshop-2



Production-Workshop-3



Warehouse-1



Warehouse-2



Warehouse-3



ANPING TAILONG

HARDWARE&WIRE MESH PRODUCTS CO.,LTD

+86-133-2318-6988
+86-153-6985-6999

Sales@fence-global.com
Sales@wiremesh-global.com

No.19, Jingsi road,
high-tech-industrialdevelopment
zone, Anping, Hebei, China

WHATSAPP

