

ANPING TAILONG

HARDWARE&WIRE MESH PRODUCTS CO.,LTD

TLWY[®]
TaiLong Fence



CATTLE RAMP
LIVESTOCK EQUIPMENT



Mobile:

+86-133-2318-6988
+86-153-6985-6999



Email:

Sales@fence-global.com
Sales@wiremesh-global.com



No.19, Jingsi road,
high-tech-industrialdevelopment
zone, Anping, Hebei, China



Cattle Ramp

The Cattle Ramp is a specially designed loading system used for safely guiding cattle onto trucks, trailers, or elevated platforms. Built with high-strength galvanized steel, the ramp offers exceptional durability, stability, and resistance to harsh outdoor environments, making it suitable for both commercial livestock farms and transportation companies.





DESCRIPTION

This ramp ensures smooth and stress-free loading, reducing the risk of injuries to both animals and handlers. The non-slip flooring, side safety rails, and proper incline angle provide a secure and comfortable passage for cattle. With easy assembly and customizable dimensions, the ramp can meet various operational needs in cattle handling facilities.

Materials: 2.0–3.0mm thick high-strength steel (frame & surface); galvanized steel (components); anti-rust electrostatic powder coating

Overall Dimensions: Length (ramp surface): 200cm – 400cm;

Width: 70cm – 90cm;

Side Rail Height: 90cm – 120cm

Adjustable Parameters: Incline angle: 15°–30°;

Height (ground to ramp top): 80cm – 180cm
(fits most trailer/truck heights)

Anti-Slip Design: Diamond plate/grid surface (anti-slip coefficient ≥ 0.8); optional rubber mat overlay

Key Components:

Lockable side rails (removable for easy cleaning); heavy-duty support legs (with anti-sink foot pads); safety latch (to secure ramp to trailer)

Weight Capacity: ≥ 2000 kg (supports adult bulls)

Mobility: Portable (with built-in handles/wheels) or fixed-mounted options

Service Life: ≥ 12 years (galvanized steel, proper maintenance)



Different Types



Heavy Duty Adjustable Loading Ramp



Load Master Loading Ramp



Load Master Loading Ramp Side Load



Stockman Adjustable Loading Ramp

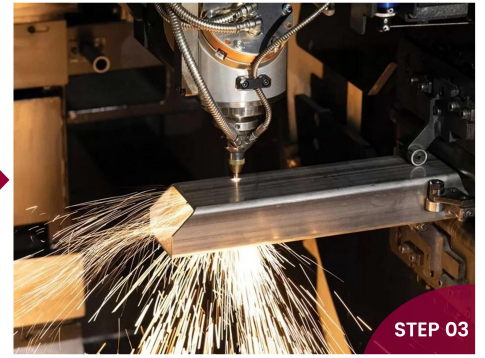
Production Flow Chart



Hot-Dip Galvanized Steel Pipes-Hot



Dip Galvanized Sheet



Laser Cutting



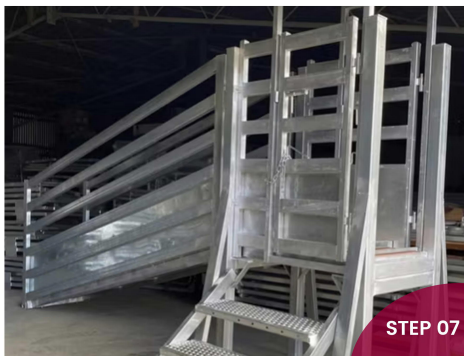
Welding



Grinding

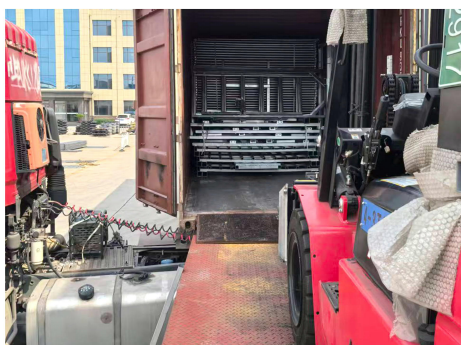


Hot-Dip Galvanizing



Finish

Package & Delivery





FEATURES & APPLICATION

FEATURES

✓ Ramp Design

Optimal slope: 8–10°
 Maximum slope: ≤ 15°
 Ramp width: 700–900 mm (single-lane)
 The longer and gentler the ramp, the better.

✓ Floor Requirements

Slip resistance is paramount.
 Non-slip concrete (roughened surface)
 Rubber mats
 Transverse anti-slip strips (spacing 300–400 mm)

✓ Fences and Guardrails

Height: 1.4–1.6 m
 Structure: Enclosed or semi-enclosed side rails
 Prevents cattle from being distracted or turning around.

APPLICATION





ANPING TAILONG

HARDWARE&WIRE MESH PRODUCTS CO.,LTD

+86-133-2318-6988
+86-153-6985-6999

Sales@fence-global.com
Sales@wiremesh-global.com

No.19, Jingsi road,
high-tech-industrialdevelopment
zone, Anping, Hebei, China

WHATSAPP

