

ANPING TAILONG

HARDWARE&WIRE MESH PRODUCTS CO.,LTD

TLWY[®]
TaiLong Fence



EDGE PROTECTION BARRIER
TEMPORARY FENCE



Mobile:

+86-133-2318-6988
+86-153-6985-6999



Email:

Sales@fence-global.com
Sales@wiremesh-global.com

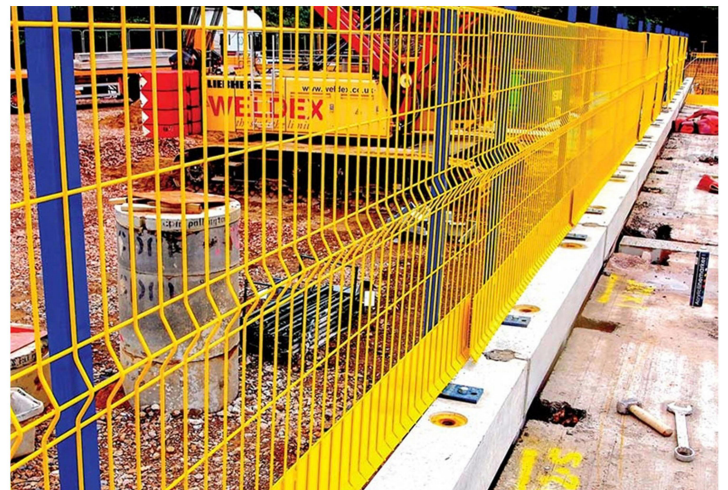
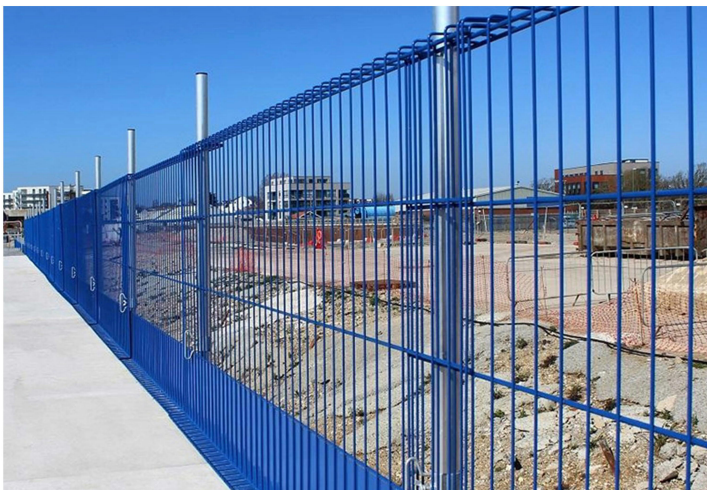


No.19, Jingsi road,
high-tech-industrialdevelopment
zone, Anping, Hebei, China



Edge Protection Barrier

Construction edge protection fencing, also known as edge protection fencing, is an indispensable core safety facility in construction sites, high-altitude work platforms, and other areas. It is specifically designed to create a solid and reliable physical barrier around building floors, staircases, platforms, balconies, and various openings where there is a risk of fall. Its fundamental purpose is to effectively prevent personnel, tools, and materials from accidentally falling from heights, thereby ensuring the safety of construction workers and avoiding injuries from falling objects. It is a direct reflection of the level of civilized construction and safety management on a construction site.

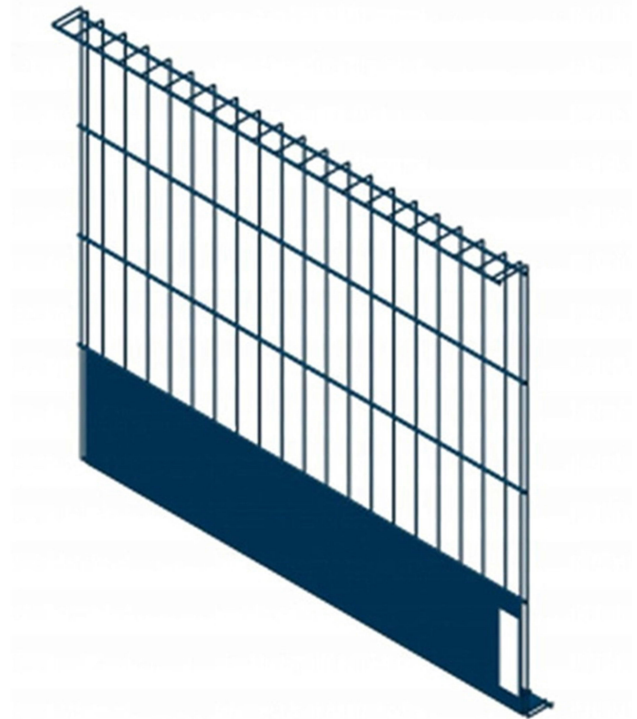




DESCRIPTION

The key features of an edge protection barrier include:

- A Physical Barrier:** It prevents the fall of workers, pedestrians, or vehicles.
- B Height and Strength:** Usually, it is tall enough to stop accidental falls, and strong enough to withstand forces (especially in construction zones).
- C Temporary or Permanent:** These barriers can be either temporary (used on construction sites) or permanent (for roads, bridges, etc.).
- D Design Variability:** They can vary in design, ranging from simple guardrails to more complex systems that can include netting or fencing.



Type	Border Wire	Mesh Wire	Length	Width	Color
Steel Mesh Barrier with Toeboard	8.0mm	5.0mm	2600mm	1150mm	RAL Series
Steel Mesh Barrier Without Toeboard	8.0mm	5.0mm	2600mm	1150mm	RAL Series
Steel Mesh Barrier Make Up	8.0mm	5.0mm	2600mm	1150mm	RAL Series
Steel Mesh Barrier 1.3M	8.0mm	5.0mm	2600mm	1150mm	RAL Series
Steel Mesh Barrier Make Up 1.3M	8.0mm	5.0mm	2600mm	1150mm	RAL Series



Production Flow Chart



STEP 01

Galvanized Wire



STEP 02

Teel Wire Straightening And Cutting



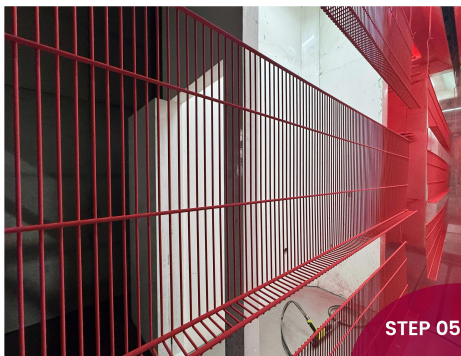
STEP 03

Bending



STEP 04

Polishing



STEP 05

Power Coating



STEP 06

Finish

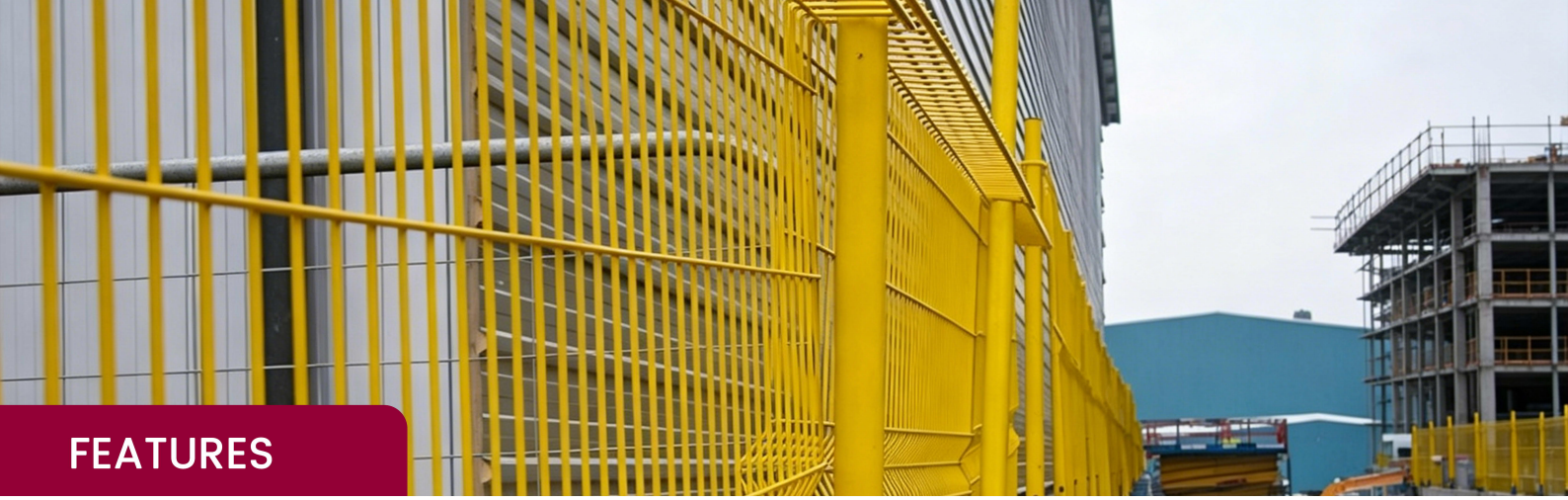
Package & Delivery



PANEL PACKAGE



EDGE PROTECTION BARRIER DELIVERY



FEATURES

✔ Protective Function

Fall Prevention: The primary function of edge protection fencing is to prevent people or objects from falling from heights, especially on construction sites and in areas requiring work at height. By installing fencing or barriers, the work area is separated from the hazardous edge.

Structural Stability: These fences are typically made of robust metal, steel, or other durable materials, ensuring they are not easily collapsed under high wind speeds or strong impacts, providing reliable protection.

✔ Enhanced Safety Design

No Sharp Edges: To avoid worker injury, edge protection barriers typically feature rounded or closed edges, avoiding sharp parts.

Suitable Height and Width: Generally, edge protection fences are between 1 and 1.5 meters high, effectively blocking the risk of falls and clearly marking danger zones.

Markings and Warnings: Many edge protection fences are equipped with clear safety signs and warning signs, such as "Danger" signs and construction area markings, reminding workers to pay attention to safety.

✔ Easy for Signage and Advertising

Features: The surface of crowd control barriers can often be used to display signs, directional markers, or advertisements, which is especially important for large events, trade shows, and marketing campaigns.

Advantages: Increases the promotional effect of the event while clearly indicating pathways and safe areas.

✔ Flexible Installation and Dismantling

Quick Installation: Edge protection fencing is generally designed with a modular structure, allowing for quick installation and dismantling, suitable for temporary construction areas. Installation and dismantling are convenient, and the position can be adjusted as construction progresses.

Adjustability: These fences are typically adjustable in height and length to adapt to different site requirements.

✔ Adaptability to Different Sites

High-Altitude Work and Construction Sites: Edge protection fences are essential for high-altitude work such as building construction, bridge construction, and high-rise building construction. They effectively prevent workers from falling from heights and ensure the safety of the construction site. **Temporary Construction Areas:** Edge protection fencing can be used to enclose temporary construction areas, isolating hazardous areas and preventing unauthorized personnel from entering.

Bridge and Tunnel Projects: In special sites such as bridge construction and tunnel construction, edge protection barriers provide effective protection to prevent workers from falling.

✔ Enhanced Event Safety

Features: Crowd control barriers effectively prevent excessive crowd gathering in one area, avoiding accidents such as stampedes and pushing.

Advantages: Diverts crowds, guides routes, and restricts access to dangerous areas, improving the safety of participants and staff.

✔ Multiple Material Options

Metal (Steel or Aluminum Alloy): Metal materials are commonly used for edge protection fencing because of their high impact resistance, corrosion resistance, and durability. Steel or aluminum alloy fences can withstand significant forces, ensuring safety.

Plastic or PVC: Some lightweight edge protection fences may use plastic or PVC materials. These fences are suitable for lighter working environments but not for areas requiring higher strength.

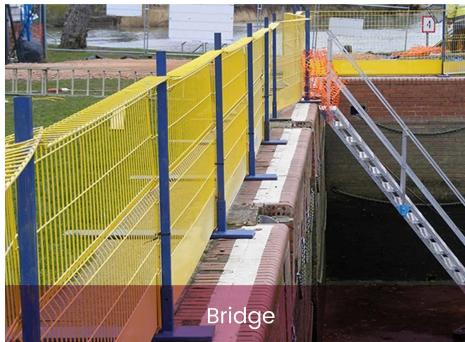
Wire Mesh Material: Some fences use a wire mesh structure, allowing for visibility while effectively preventing people or objects from falling.

✔ Strong Weather Resistance

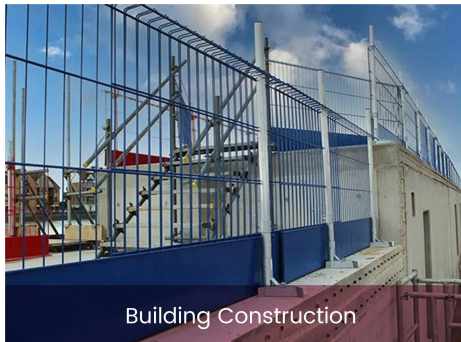
Wind, Rain, and UV Resistance: Edge protection fencing is frequently exposed to the outdoors and must withstand harsh weather conditions. Many fences use UV-resistant coatings and galvanized steel materials to ensure stable protective effects in rain, sunlight, and sandstorms.



APPLICATION



Bridge



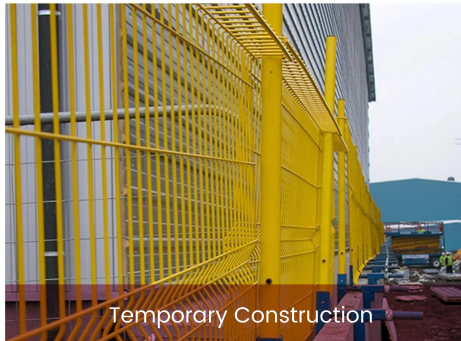
Building Construction



Platform Edge



Railway



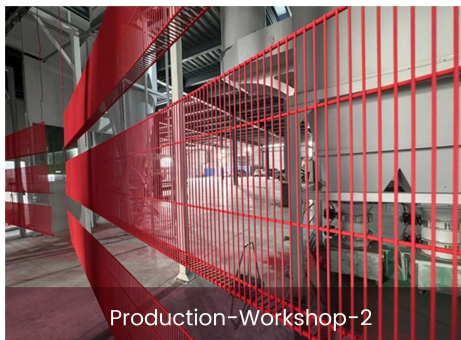
Temporary Construction



Temporary Isolation Area



Production-Workshop-1



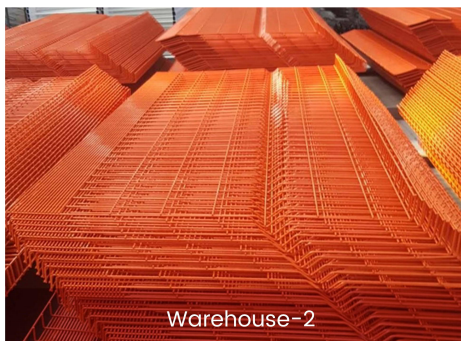
Production-Workshop-2



Production-Workshop-3



Warehouse-1



Warehouse-2



Warehouse-3



ANPING TAILONG

HARDWARE&WIRE MESH PRODUCTS CO.,LTD

+86-133-2318-6988
+86-153-6985-6999

Sales@fence-global.com
Sales@wiremesh-global.com

No.19, Jingsi road,
high-tech-industrialdevelopment
zone, Anping, Hebei, China

WHATSAPP

