

ANPING TAILONG

HARDWARE&WIRE MESH PRODUCTS CO.,LTD

TLWY[®]
TaiLong Fence



FLAT TOP TUBULAR STEEL FENCE
STEEL FENCE



Mobile:

+86-133-2318-6988
+86-153-6985-6999



Email:

Sales@fence-global.com
Sales@wiremesh-global.com



No.19, Jingsi road,
high-tech-industrialdevelopment
zone, Anping, Hebei, China



Flat Top Tubular Steel Fence

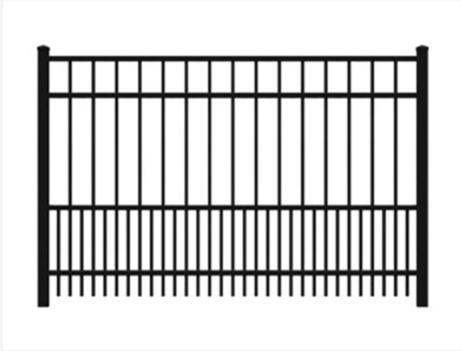
Flat Top Fence Tubular steel fence is a fencing system constructed from hollow steel tubes, designed for durability, strength, and an aesthetically appealing appearance. It is widely used in residential, commercial, industrial, and public settings due to its balance of functionality and visual appeal.

Steel fencing is a type of fencing made of zinc-plated steel. Due to its strong corrosion resistance, attractive appearance, and long service life, it is widely used in residential areas, public facilities, factories, schools, and other locations. Its structure generally consists of steel pipes, steel posts, and crossbars, with a galvanized surface treatment, providing excellent corrosion resistance and weather resistance.

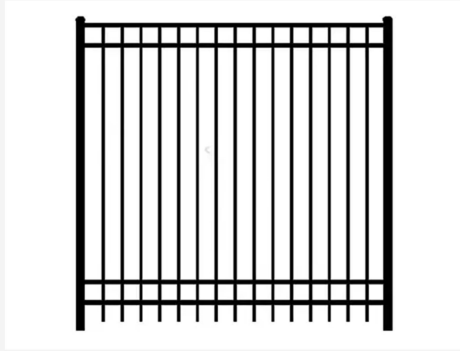


Height	1200 mm, 1500 mm, 1800 mm, 2100 mm
Width	1800 mm, 2000 mm, 2400 mm
Vertical Picket	Size:15mm×15mm,19mm×19mm,25mm×25mm; Thickness: 0.8–2.0mm
Vertical Pipe Spacing	100 mm, 110 mm, 120 mm
Horizontal Rail	Size:30mm×30mm,40mm×40mm,45mm×45mm; Quantity: 2 rails, 3 rails, 4 rails
Post	Size:50mm×50mm,60mm×60mm,80mm×80mm, 100mm×100mm; Thickness: 1.2–3.0mm

Different Style



Aluminum Fat Top

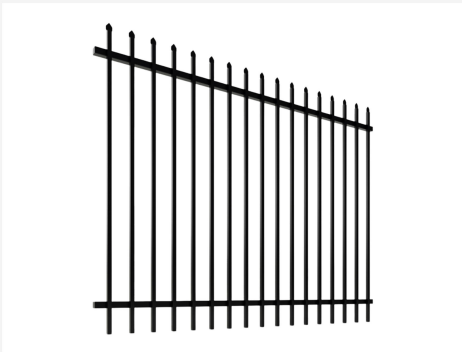


Flat Top



Flat Top Pattern

Main Components

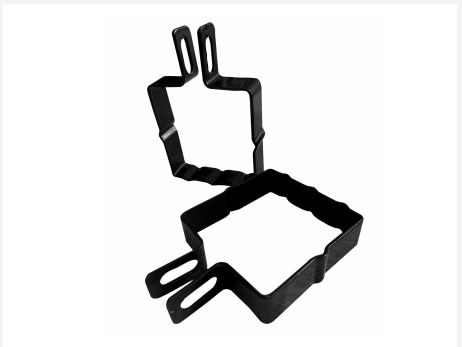


Fence Panel



Square Post

Optional Accessories



End Brackets



Line Brackets



Mounting Brackets



Post Caps



Railing Brackets



End Brackets



Production Flow Chart



Raw Materials



Laser-Cut Tube



Steel Picket Fence Panel Welding

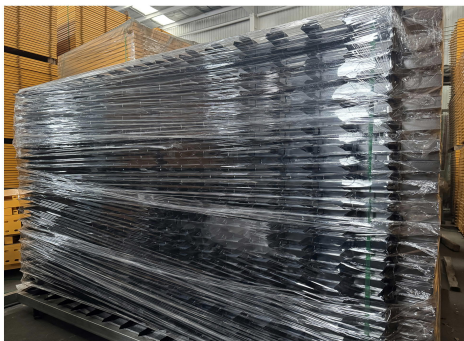


Steel Fence Panel Powder Coating



Quality Inspection

Package & Delivery



PANEL PACKAGE



POST PACKAGE



STEEL FENCE DELIVERY

FEATURES

✔ Strong Corrosion Resistance

Features: The steel surface of zinc-steel fencing undergoes hot-dip galvanizing, forming a dense zinc layer. This zinc layer effectively prevents oxygen and moisture from contacting the steel, thus greatly improving its corrosion resistance. Advantages: Even in harsh outdoor environments (such as humid and rainy areas), it maintains a long service life, preventing rust and corrosion.

✔ Aesthetics

Features: The surface of zinc-steel fencing can be treated with spraying, baking paint, etc., resulting in a smooth, flat surface with vibrant colors, meeting modern aesthetic requirements. Advantages: 1. Simple and elegant appearance with clean lines: It blends well into various environments, making it particularly suitable for residential areas, gardens, public places, and other locations requiring aesthetic appeal.

✔ High Strength and Robustness

Features: Zinc-steel fences use steel pipes as the main support material. The high strength of the steel results in a robust and durable structure with strong impact resistance. Advantages: Suitable for locations requiring high protection, such as industrial areas, road barriers, and school fences, effectively preventing external damage or unauthorized intrusion.

✔ Weather Resistance and High Temperature Resistance

Features: The galvanized layer of zinc-steel fences effectively protects the steel from the effects of climate change, making it resistant to high temperatures and resistant to aging. Advantages: Can be used in harsh environments such as high temperatures and strong ultraviolet radiation, suitable for areas with significant seasonal changes.

✔ Strong Protective Function

Features: Zinc-steel fences typically have a robust structural design with moderately spaced mesh or iron bars, effectively preventing unauthorized entry. Advantages: Prevents unauthorized personnel from entering specific areas, providing a high level of security, especially suitable for schools, factories, warehouses, and industrial parks.

✔ Resistant to Fading and Aging

Features: The surface coating of zinc-steel fences, after baking paint or powder coating, has strong UV resistance, making it resistant to fading and aging. Advantages: Even after prolonged exposure to sunlight, it maintains a fresh appearance for a long time, requiring no frequent maintenance or replacement.

✔ Easy Installation

Features: Zinc-steel fences are typically designed for simplicity, requiring minimal technical skills for installation. They can be quickly secured using screws or specialized accessories. Advantages: Saves installation time and labor costs, suitable for rapid deployment in various settings.

✔ Customizable

Features: The height, width, mesh style, and color of zinc-steel fences can all be customized to meet specific needs, satisfying the functional and aesthetic requirements of different locations. Advantages: Highly adaptable, allowing for personalized design based on site conditions, providing a variety of options.

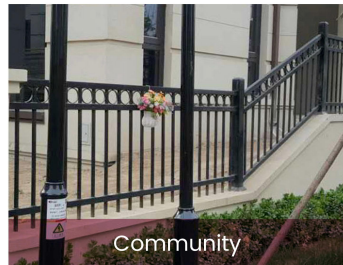
✔ Easy Maintenance

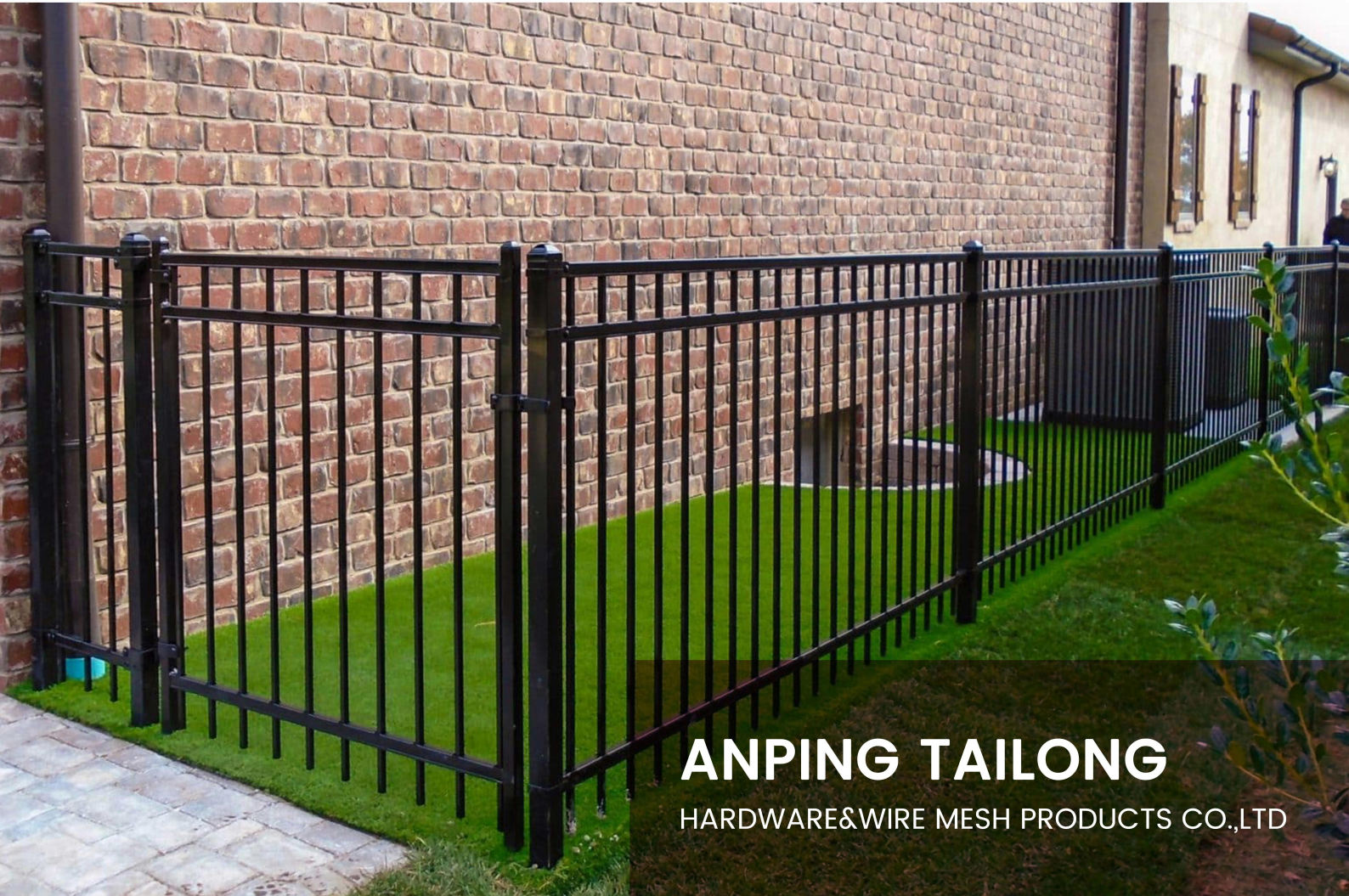
Features: The smooth surface of zinc-steel fences prevents dust and water accumulation, and the galvanized layer effectively prevents rust, thus requiring minimal cleaning and maintenance. Advantages: Compared to other metal fences, zinc-steel fences are easy to maintain, reducing later maintenance costs and workload.

✔ Environmental Friendliness

Features: Zinc-steel fences use recyclable materials, and the production process does not generate excessive pollution. Advantages: Meets environmental protection requirements and is increasingly favored in modern architecture and urban planning.

APPLICATION





ANPING TAILONG

HARDWARE&WIRE MESH PRODUCTS CO.,LTD

+86-133-2318-6988
+86-153-6985-6999

Sales@fence-global.com
Sales@wiremesh-global.com

No.19, Jingsi road,
high-tech-industrialdevelopment
zone, Anping, Hebei, China

WHATSAPP

