

# ANPING TAILONG

HARDWARE&WIRE MESH PRODUCTS CO.,LTD

**TLWY**<sup>®</sup>  
**TaiLong Fence**



**HEAVY-DUTY CATTLE CRUSH  
LIVESTOCK EQUIPMENT**



Mobile:

+86-133-2318-6988  
+86-153-6985-6999



Email:

Sales@fence-global.com  
Sales@wiremesh-global.com



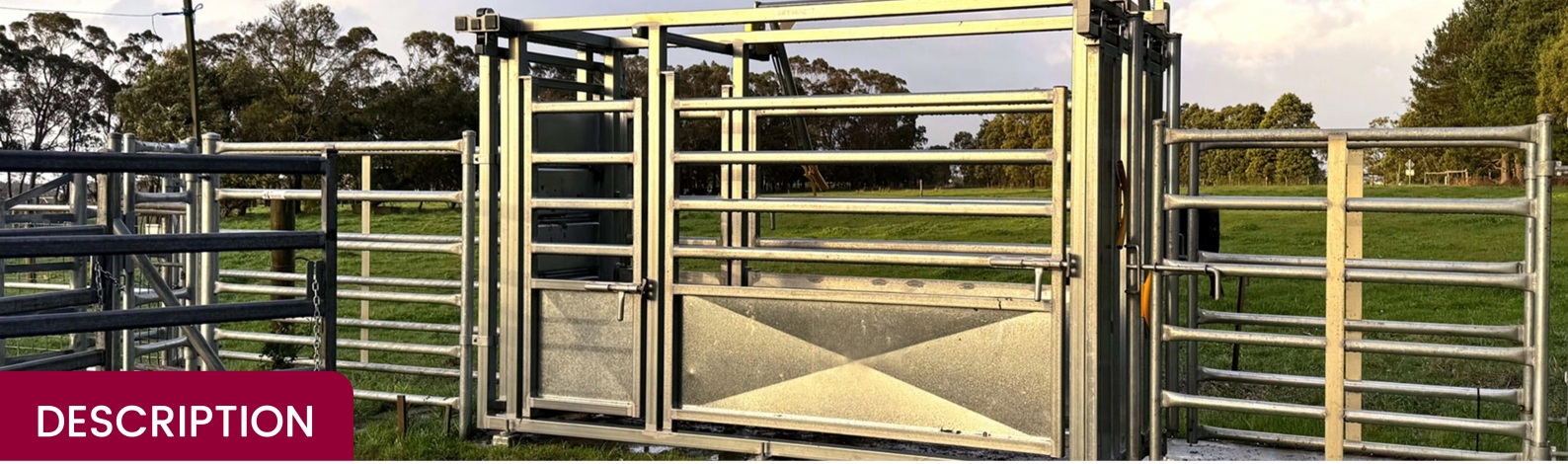
No.19, Jingsi road,  
high-tech-industrialdevelopment  
zone, Anping, Hebei, China



## Heavy-Duty Cattle Crush

Ensure safety and strength with our premium heavy-duty cattle crush, designed specifically for the demanding tasks on Australian farms. Weighing a robust 680kg, this crush provides superior stability for vet checks, tagging, health treatments, and more.





## DESCRIPTION

**Materials:** 2.0–3.0mm thick high-strength steel (frame); galvanized steel (components); anti-rust coating

**Overall Dimensions:** Length: 240cm – 300cm; Width: 75cm – 90cm; Height: 180cm – 220cm

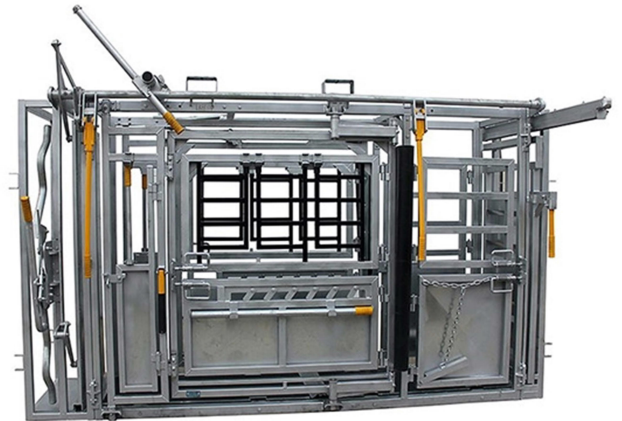
**Adjustable Range:** side panel gap: 30cm – 60cm (fits cattle weighing 200kg – 1200kg)

**Key Components:** Manual/ hydraulic head gate; adjustable belly strap; side locking bars; anti-slip rubber floor; removable access doors

**Operation Mode:** Manual (mechanical lever) / Hydraulic (electric/pneumatic optional)

**Weight Capacity:** ≥1500kg

**Service Life:** ≥10 years (proper maintenance)



### Key Features:

**Durable Steel Construction:** Built to last with long-term, high-performance durability.

**Safety First:** Designed for the protection of both cattle and handlers, reducing stress during handling.

**Easy Access Points:** Multiple entry points make handling cattle of all sizes quick and safe.

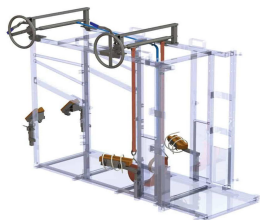
**Weather-Resistant Finish:** Available in galvanised or powder-coated options, ideal for harsh outdoor conditions.

**Versatile Design:** Perfect for various livestock sizes, ensuring maximum flexibility for your farm's needs.

### Additional Products



Cattle-Crush-Extension



Foot Trimming Kit



Sliding Gate for Rear of Crush

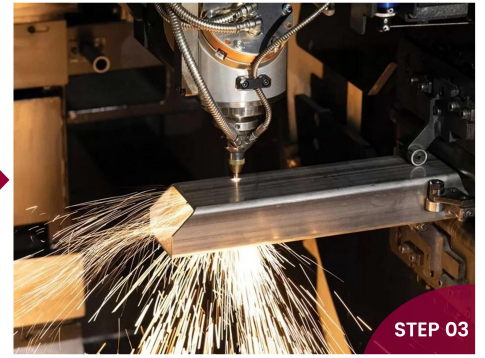
## Production Flow Chart



Hot-Dip Galvanized Steel Pipes



Galvanized Sheet



Laser Cutting



Laser Welding



Polishing



Hot-Dip Galvanizing

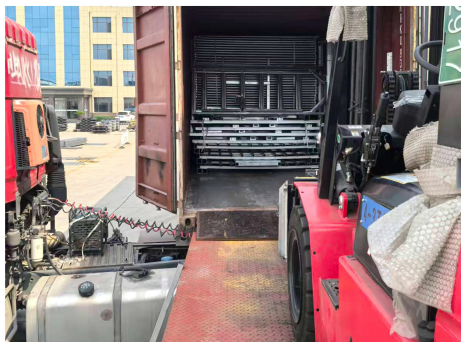


Finish

## Package & Delivery



PACKAGES



DELIVERY



## FEATURES & APPLICATION

### FEATURES

- ✔ **Parallel Side Squeeze** for secure and balanced cattle handling
- ✔ **Customisable Design** to suit your operational needs
- ✔ **Heavy-Duty Construction** built from quality Australian steel
- ✔ **Hot-Dip & Pre-Galvanised Finish** for long-term rust protection
- ✔ **Wider Frame** to accommodate larger cattle with ease
- ✔ **Extended Internal Length** for smoother cattle flow and comfort
- ✔ **Operator-Side Vet Gate** for fast and safe animal access
- ✔ **Double Bisalloy Ratchet Plate** for extra strength and reliability
- ✔ **Auto-Locking Slide Gate** for quick and secure front gate control
- ✔ **Rump Bar** to prevent cattle from backing up during procedures
- ✔ **Integrated Branding Gates** for efficient processing

### APPLICATION





## ANPING TAILONG

HARDWARE&WIRE MESH PRODUCTS CO.,LTD

+86-133-2318-6988  
+86-153-6985-6999

Sales@fence-global.com  
Sales@wiremesh-global.com

No.19, Jingsi road,  
high-tech-industrialdevelopment  
zone, Anping, Hebei, China

WHATSAPP

