

ANPING TAILONG

HARDWARE&WIRE MESH PRODUCTS CO.,LTD

TLWY[®]
TaiLong Fence



SHEEP PANELS **LIVESTOCK FENCE PANEL**



Mobile:

+86-133-2318-6988
+86-153-6985-6999



Email:

Sales@fence-global.com
Sales@wiremesh-global.com

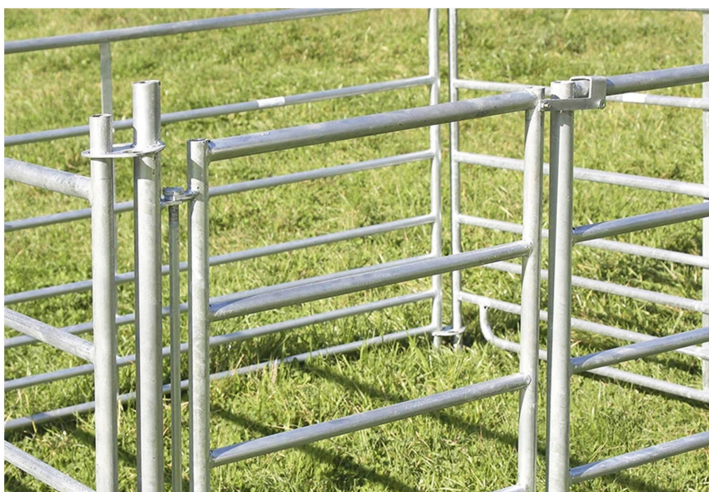


No.19, Jingsi road,
high-tech-industrialdevelopment
zone, Anping, Hebei, China



Sheep Panel

Sheep and goat panels are medium-strength fencing panels designed with tight mesh spacing to prevent small animals from escaping. Lightweight, corrosion-resistant, easy to install.



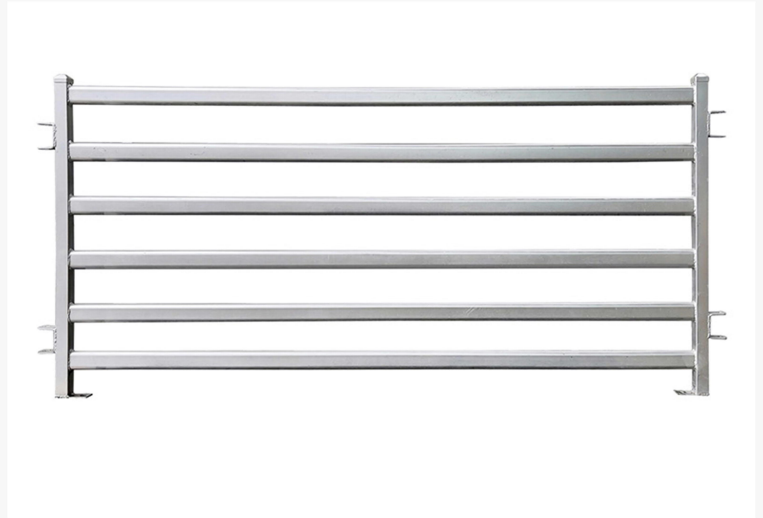


DESCRIPTION & CATEGORY

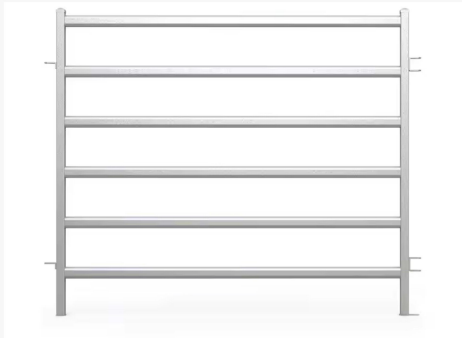
Common Sizes: Height:1.6m–1.8m
 Length:2.1m / 2.2m / 2.4m / 3.0m
 Pipe:32mm / 42mm / 48mm
 Wall thickness:1.5–2.0mm

Features: Small aperture mesh, prevents escape
 Lightweight but strong
 Weather resistant
 Flexible installation

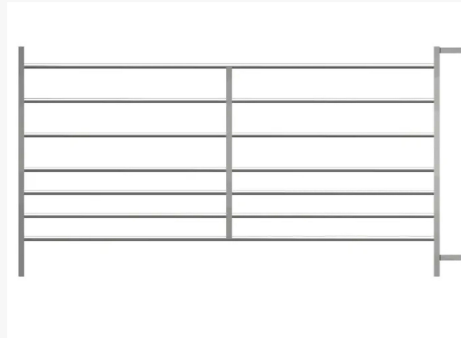
Applications: Sheep farms
 Goat enclosures
 Movable field fencing
 Internal pen partitions



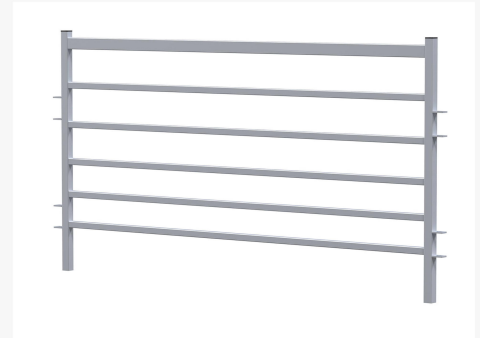
Rail Type



Oval Rail With Square Post Style

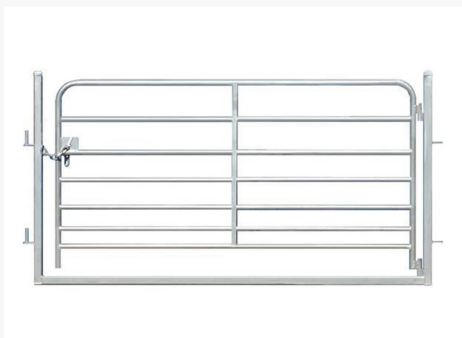


Round Rail Style



Quick-Pin Latch System

Sheep Panel Gate



Clamps



Connecting Steel Tubes



Production Flow Chart



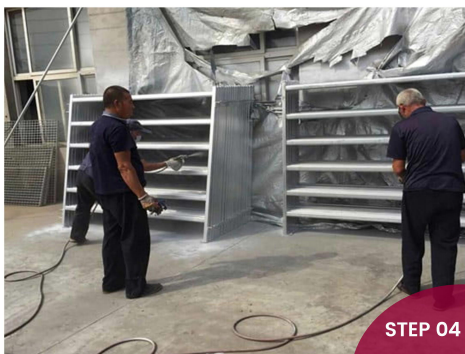
Hot-Dip Galvanized Steel Pipes



Laser Cutting



Laser Welding



Hot-Dip Galvanizing



Finish

Package & Delivery



PANEL PACKAGE



PANEL DELIVERY



FEATURES

FEATURES

✔ Durable Materials

Common Materials: Common materials for sheep fence panels include wood, metal (such as steel, wire mesh), plastic, and composite materials. Each material has different advantages and disadvantages:

Wood: Sturdy and aesthetically pleasing, but requires regular maintenance to prevent corrosion.

Metal (Steel or Wire Mesh): Durable, sturdy, not easily damaged by sheep chewing, suitable for long-term use.

Plastic: Lightweight and corrosion-resistant, but may not be as robust as metal.

Composite Materials: Corrosion-resistant, sun-resistant, durable, and usually possesses strong pressure resistance and adaptability.

✔ Corrosion Resistance and Weather Resistance

Wind and Rain Resistance: Sheep fences are often exposed to the outdoors for extended periods, therefore, they must have strong resistance to wind and rain. Corrosion resistance is particularly crucial in humid, cold, or hot climates. Metal fences are typically galvanized or powder-coated to improve corrosion resistance.

UV Resistance: If plastics or composite materials are used, the materials themselves need to be UV-resistant to prevent aging or embrittlement caused by prolonged exposure to sunlight.

✔ Structural Design

Strength: Sheep fence panels need sufficient strength to prevent sheep from breaking through the fence or escaping when startled. Since sheep sometimes run and jump due to external stimuli (such as dogs, other animals, or noise), the fence panels must have strong impact resistance.

Mesh Size: To prevent sheep from squeezing out of the fence, the mesh size is usually designed to be smaller than the width of a sheep's head or body, generally with intervals of 10-20 cm. This effectively prevents sheep from escaping from either the inside or outside of the enclosure.

No Sharp Corners Design: To prevent sheep from being injured by sharp parts of the enclosure, sheep fence panels generally avoid sharp corners or protrusions, ensuring the safety of sheep while moving within the enclosure.

✔ Escape Prevention Design

Underground Protection: Sheep sometimes attempt to escape by digging or pulling on the ground. Therefore, the bottom of the sheep fence panels can be designed to be buried underground, or an underground protective net can be used to prevent sheep from burrowing underground to escape.

Top Protection: Although sheep are relatively weak jumpers, they may sometimes jump under pressure. To prevent sheep from jumping out, some sheep fence panels may have reinforced designs at the top, such as a mesh structure or a curved top.

✔ Height Design

Moderate Height: The height of sheep fence panels is typically 1.2-1.5 meters. Sheep have limited jumping ability, so the fence height does not need to be excessive; around 1.2 meters is sufficient to prevent sheep from jumping out. However, for higher-risk locations (such as areas where livestock come into contact with wild animals), the fence height may be appropriately increased.

✔ Flexibility and Adjustability

Removable Design: Sheep fence panels sometimes need to be moved or dismantled periodically, especially in grazing areas or seasonal farms. For ease of management, many sheep fence panels are designed to be removable or adjustable in size, allowing farmers to adjust the fence layout as needed.

High Adaptability: Since different farms may require different fence configurations, sheep fence panels are often designed to adapt to different terrains and can be installed on flat ground or slightly sloping ground.

APPLICATION



Pasture



Sick Sheep Isolation Area



Tourist Area



Transport Area



Animal Protection



Large Scale Grasslands



ANPING TAILONG

HARDWARE&WIRE MESH PRODUCTS CO.,LTD

+86-133-2318-6988
+86-153-6985-6999

Sales@fence-global.com
Sales@wiremesh-global.com

No.19, Jingsi road,
high-tech-industrialdevelopment
zone, Anping, Hebei, China

WHATSAPP

