

ANPING TAILONG

HARDWARE&WIRE MESH PRODUCTS CO.,LTD

TLWY[®]
TaiLong Fence



SNAKE RAZOR BARBED WIRE
BARBED WIRE



Mobile:

+86-133-2318-6988
+86-153-6985-6999

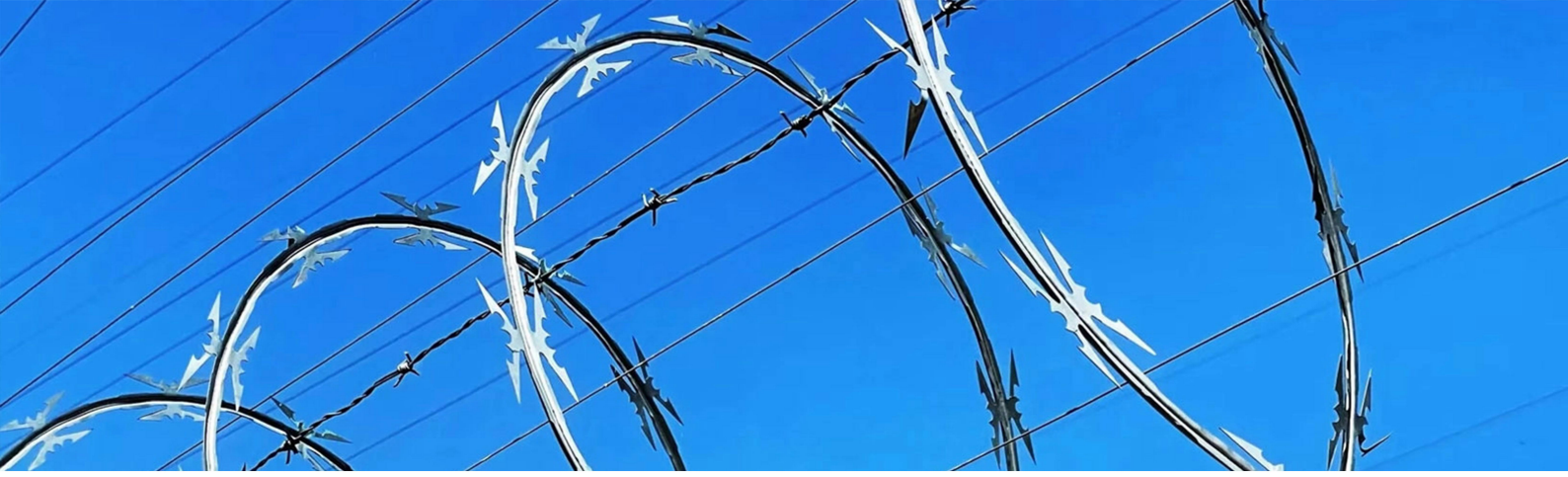


Email:

Sales@fence-global.com
Sales@wiremesh-global.com



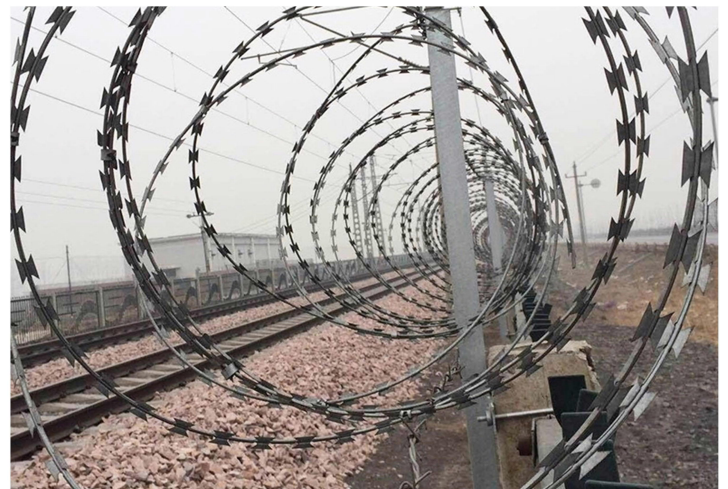
No.19, Jingsi road,
high-tech-industrialdevelopment
zone, Anping, Hebei, China



Snake Razor Barbed Wire

The snake-shaped blade net is also known as blade net, scraper-type net, knife-shaped wire net, or snake-shaped blade wire net.

The snake-shaped blade net is a new type of product with strong protection and isolation capabilities in recent years. The blade net is made of corrosion-resistant hot-dip galvanized steel plate or stainless steel plate, and is firmly attached to the core wire made of hot-dip high-carbon steel wire or stainless steel wire by a special machine. Due to its sharp and beautiful blade, and the high-strength core wire, this product integrates many advantages such as good anti-blocking effect, difficult to be damaged, convenient and fast installation, and resistance to aging.





DESCRIPTION

Characteristics of the Snake Belly Blade Fishing Net: This product has features such as anti-corrosion, anti-aging, resistance to sun exposure, and durability. It is resistant to corrosion and has a longer lifespan than ordinary iron wire. The anti-corrosion methods include electroplating, hot plating, and powder coating.

Application of the Snake Belly Blade Fishing Net: It is mainly used for enclosure protection in gardens, apartments, government agencies, prisons, outposts, and border defense.

Manufacturing Process of the Snake Belly Blade Fishing Net: The blade fishing net is made by stamping sharp blade-shaped pieces from hot-dip galvanized steel plates or stainless steel sheets, and combining high-tension galvanized steel wires or stainless steel wires as the core wires to form a barrier device. Due to its unique shape that is difficult to touch, it can achieve excellent protective and isolation effects. The main materials of the product include galvanized steel plates and stainless steel plates.

Customers can customize according to their requirements. Our factory can also design on their behalf to meet their needs.

Snake Razor Barbed Wire Specification

Photo	Outside diameter	Circles No.	Length to be covered
	450 mm	56	8-9 m (3 clips)
	500 mm	56	9-10 m (3 clips)
	600 mm	56	10-11 m (3 clips)
	600 mm	56	8-10 m (5 clips)
	700 mm	56	10-12 m (5 clips)
	800 mm	56	11-13 m (5 clips)
	900 mm	56	12-14M (5 clips)
	960 mm	56	13-15 m (5 clips)
	980 mm	56	14-16 m (5 clips)



CATEGORY

Material



Galvanized

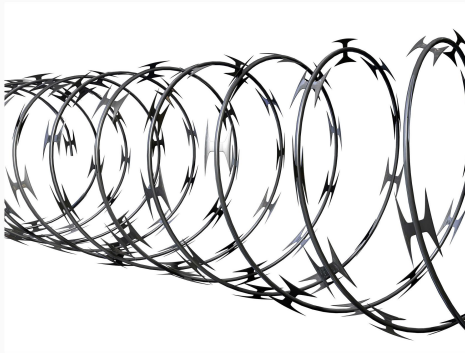


Powder Coating



Stainless Steel

Structure



Concertina



Flat Wrap



Single Coil



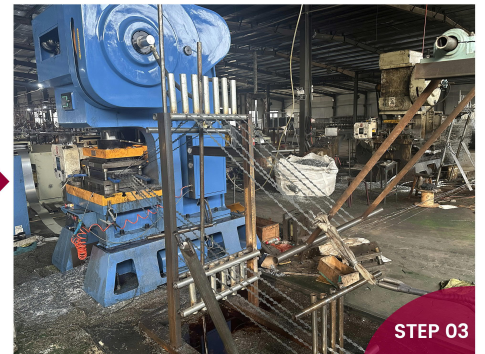
Production Flow Chart



Plates



Plate Forming



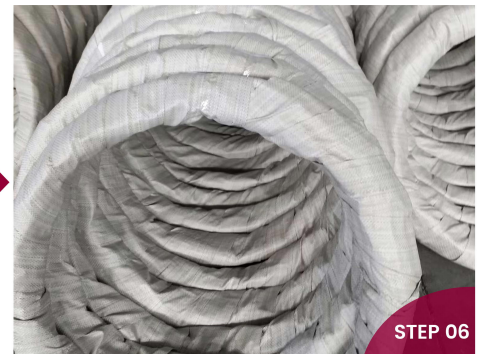
Razor Wire Forming



Razor Wire Coil



Clip Installation



Package

Package & Delivery



BULK DELIVERY



BUNDLE DELIVERY



FEATURES

✔ Appearance

Design: Unlike traditional barbed wire, razor wire uses sharp, flat steel strips with scissor-like edges. These sharp blades are designed to inflict serious injury on anyone attempting to cut or climb over them.

Coil Structure: Razor wire is typically arranged in coils or spirals, wound more tightly than ordinary barbed wire, forming a dense and robust barrier.

Sharpness: This type of wire features multiple protruding sharp blades or edges, making it significantly more dangerous than standard barbed wire.

✔ Installation

Flexible Deployment: Razor wire can be installed in various ways – for example, mounted on walls, on top of fences, or as part of a completely new security barrier.

Compact and Efficient: Unlike traditional barbed wire, razor wire has a compact coil structure, allowing it to cover a larger area without taking up excessive space. This makes it more efficient in terms of storage and deployment.

✔ Types and Variants

Single-Coil Razor Wire: Made from a single coil of razor wire stretched and layered during installation.

Spiral Razor Wire: A more advanced type of razor wire arranged in a spiral (accordion) pattern, expanding to cover a larger perimeter when deployed. It offers a strong deterrent effect and enhances overall security.

Barbed Razor Wire: Combines the features of barbed wire and razor wire, designed to combine the deterrent effect of traditional barbed wire with the danger of sharp blades.

✔ Safety

Enhanced Protection: Due to its sharp blades, razor wire is extremely difficult to cut or climb over, thus providing a higher level of security. It is more effective in preventing humans and animals from breaching security perimeters.

Deterrent Effect: The dangerous appearance of the sharp blades itself acts as a powerful deterrent. Anyone attempting to breach the barrier faces a high risk of serious injury, making it a strong psychological barrier.

✔ Effectiveness

Higher Barrier: Due to its sharp edges and compact design, razor wire is more difficult to overcome than ordinary barbed wire.

Increased Climbing Difficulty: The design makes it virtually impossible to climb. The blades will snag and tear the clothing, skin, or equipment of anyone attempting to climb.

Difficult to Penetrate: It is designed as an effective physical barrier, making it difficult for intruders or animals to pass through.

✔ Safety Precautions

Hazardous: While highly effective, the design of concertina razor wire also presents hazards during installation and handling. The sharp blades can cause serious cuts, so protective gloves and gear must be worn during installation.

Use with Caution: Due to its aggressive design, it is typically used in high-risk areas to deter anyone attempting to breach security.

✔ Durability

Corrosion Resistance: Razor wire is typically made of galvanized (zinc-coated) or stainless steel, offering excellent corrosion resistance and ensuring long-term durability even in harsh weather conditions.

Weather Resistance: Its structure allows it to withstand various weather elements (rain, moisture, sunlight, etc.), making it ideal for outdoor use in any climate.

✔ Applications

Military and Defense: Due to its effectiveness in preventing unauthorized entry, it is commonly used in military and border defense areas. **Prisons and Correctional Facilities:** Installed around the perimeter of prisons to prevent escapes and deter intruders.

High-Security Areas: Used in industrial plants, airports, and sensitive government facilities to prevent unauthorized access.

Perimeter Security: Often used on fences or walls of commercial or residential properties requiring high security.

✔ Cost

Higher Price: Considering the quality of materials and the level of security provided, concertina razor wire is generally more expensive than traditional barbed wire. However, its enhanced security features often justify the higher cost.



APPLICATION



Border Protection



Industrial Park



Military Base



Prison



Agricultural facilities



Substation



Production-Workshop-1



Production-Workshop-2



Production-Workshop-3



Warehouse-1



Warehouse-2





Warehouse-3




ANPING TAILONG

HARDWARE&WIRE MESH PRODUCTS CO.,LTD

 +86-133-2318-6988
+86-153-6985-6999

 Sales@fence-global.com
Sales@wiremesh-global.com

 No.19, Jingsi road,
high-tech-industrialdevelopment
zone, Anping, Hebei, China

 WHATSAPP

